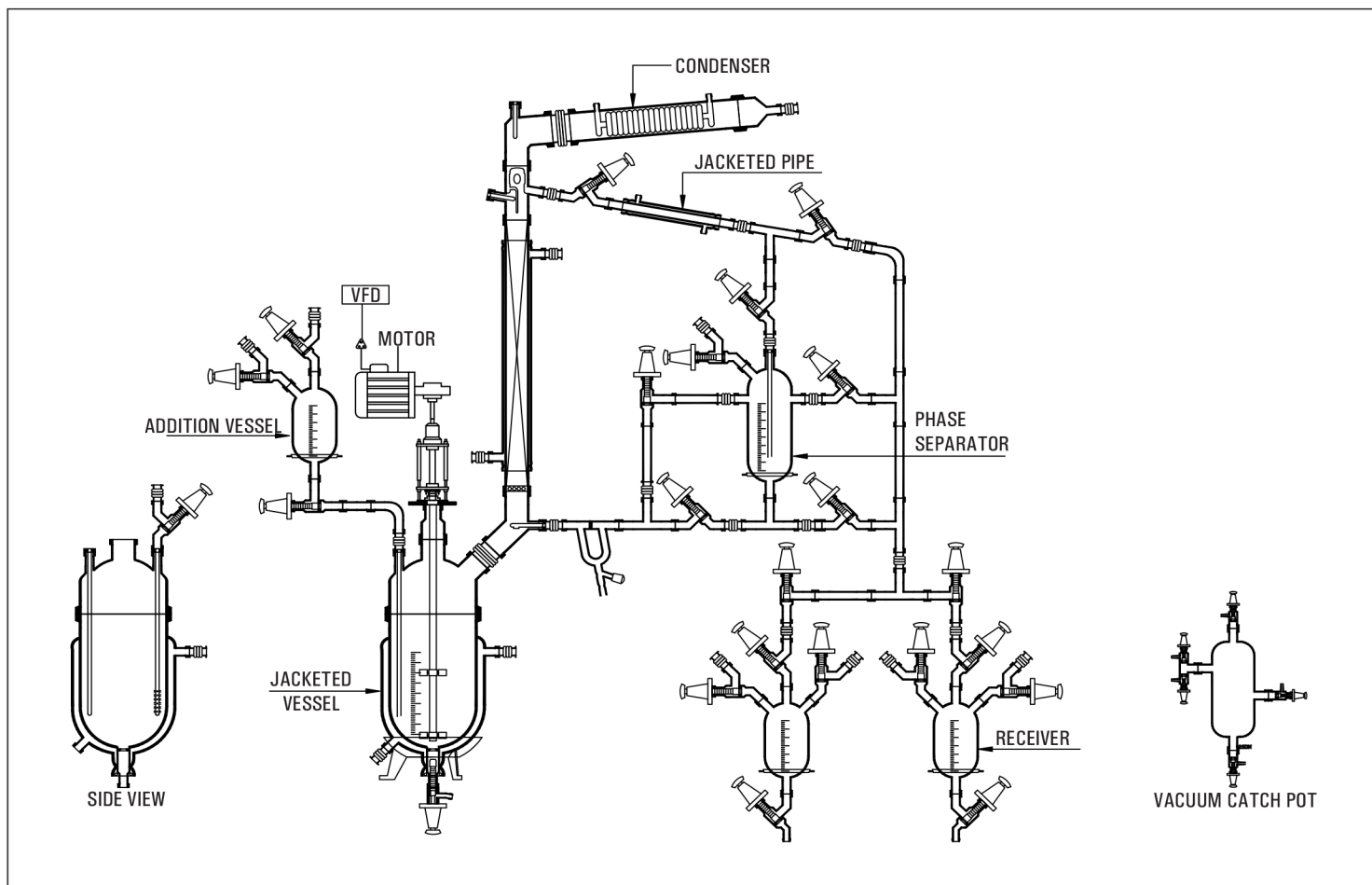


# STANDARD UNITS

## MULTI PURPOSE UNIT



- Goel Offer multipurpose pilot plant for chemical and pharmaceutical industries for process development, scale-up, process simulation and kilo-scale cGMP production in batch and semi-batch operation. The pilot plant used for chemical processing includes solid charging, liquid charging, reaction, heating / cooling, rectification, auto / manual reflux arrangement, layer separation, product cooler, vacuum catch pot, vacuum header etc.
- The multipurpose pilot plant designed in such a way that we can modify the same easily as per process requirement.

### Available with

- Jacketed full glass reactor/ Cylindrical full glass reactor with Oil heating cooling bath / Spherical full glass reactor with Oil heating cooling bath
- Multipurpose glass distillation overhead
- Stainless steel / MS epoxy coated / MS painted frame supporting
- Flame proof / Non flame proof / cGMP / non GMP models available
- Excellent corrosion resistant.
- Temp. Controller.
- Gas purging, solid charging / multi liquid addition.
- Vacuum / exhaust piping
- Additional feeders / receivers
- Solid feeding



Unit Cat. Ref.	Reaction Capacity	Bath KW	Addition Vessel	Vapour Line	Condenser HTA (M <sup>2</sup> )	Cooler HTA (M <sup>2</sup> )	Receiver Size
MPU 20	20 L	4.0	2 L	80 DN	0.35	0.10	2L, 5L
MPU 50	50 L	6.0	5 L	100 DN	0.50	0.20	5L, 10L
MPU 100	100 L	9.0	10 L	150 DN	1.50	0.35	10L, 20L
MPU 200	200 L	12.0	20 L	150 DN	1.50	0.35	10L, 20L
MPU 300	300 L	18.0	20 L	225 DN	2.50	0.50	20L, 20L
MPU 500	500 L	24.0	50 L	300 DN	4.00	0.70	50L, 50L